



Stocked Color Program

Molded-In Color Fiberglass Enclosures Program

AM & AM-R Series

Allied Moulded's Stocked Color Program makes AM & AM-R series enclosures available in four standard colors – Blue, Red, White, and Yellow – at a reduced lead time and with no minimum order quantities. Allied Moulded stocks WIP inventory of boxes and covers for the AM and AM-R enclosures sizes 8" x 6" up through 14" x 12" in the four standard colors. Additionally, white WIP inventory is stocked for sizes 6" x 6", 16" x 14", and 18" x 16".

Allied Moulded is committed to stocking quantities of sizes and colors to meet low volume requirements of customers. There is no more color matching type lead times for material procurement, so you can expect turn around to be within 5-10 working days! Allow an extra 4 weeks for window units.



Program Details

- The cost of colored enclosure products can be figured by adding (15%) to the normal purchase price of the standard grey enclosure.
- Enclosure part numbers will be released by using the standard AM or AM-R part number and adding the appropriate suffix:
 - Blue (-BL)
 - Red (-RD)
 - White (-WH)
 - Yellow (-YL)
 - Example: AM864L-RD

Base Part Numbers

Following are the base part numbers available in the stocked color program:

- AM664 / AM664R* (white only)
- AM864 / AM864R
- AM1084 / AM1084R
- AM1086 / AM1086R
- AM1206 / AM1206R
- AM1426 / AM1426R
- AM1648 / AM1648R* (white only)
- AM1868 / AM1868R* (white only)

**White only (not stocked in the other colors)*

Additional Options

- Most FRP enclosures can be molded in the stocked color program colors, with minimum quantity requirements. See the back page for ordering information on additional sizes.
- Allied Moulded can color match to any pantone color swatch. Contact Customer Service to get more details about the molded-in color match program.





Molded-In Color Match Program

Molded-In Color Match Program for Fiberglass & Polycarbonate Enclosures

AM, AM-R, AMU & AMP Series

In addition to the Stocked Color Program, Allied Moulded can color match any Pantone® color swatch for your application needs. Listed in the chart to the right are the minimum order quantities for the available enclosures based on raw material requirements.



Part Number	Min. Qty	Part Number	Min. Qty
AM743	650	AM2068(R).....	80
AM943.....	600	AM24208R.....	75
AM664(R).....	450	AM24200R.....	75
AM864(R).....	350	AM24248R.....	75
AM1084(R).....	275	AM24240R.....	75
AM1086(R).....	225	AM30248R.....	75
AM1206(R).....	175	AM30240R.....	75
AM1224(R).....	175	ULTRALINE®	
AM1226(R).....	175	(AMU) Series.....	500
AM1426(R).....	150	*POLYLINE®	
AM1648(R).....	100	(AMP) Series.....	500
AM1868(R).....	80		

**Polycarbonate material enclosures*

Additional Modifications

Allied Moulded continues to push the boundaries and has worked hard to be your source for fast, no-hassle modifications. With complete modification services, the need for inconvenient secondary handling of your enclosure is eliminated, saving you time and money. In addition to the Stocked Color Program, Allied Moulded offers a variety of additional modification services, including:

- Custom Holes & Cutouts
- Polycarbonate Viewing Windows
- EMI/RFI Shielding
- Silk Screen Printing
- Specialized Hardware
- Custom Panels

For more information on enclosure modifications, or to utilize our modification services on your enclosure project, call or email our customer service department today!



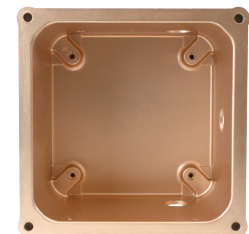
Custom Panels



Silk Screen Printing



Custom Holes & Cutouts



EMI/RFI Shielding