



ALLIED MOULDED PRODUCTS, INC.

222 NORTH UNION ST.

BRYAN, OHIO 43506

Phone: 419-636-4217

WEB: www.alliedmoulded.com

Fax: 419-636-2450

Email: sales@alliedmoulded.com

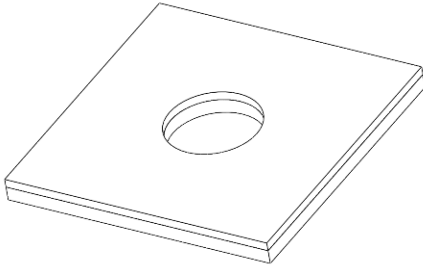
Floor Box Installation Instructions

These instructions apply to part numbers FB-3, FB-3N

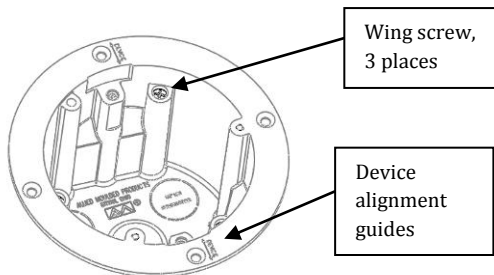
CAUTION: Risk of Electric Shock! Disconnect power to the circuit on which the Floor Box is being installed before installation

1. Locate desired position in room for the Floor Box installation. It is recommended to position the floor box between floor joists to avoid cutting into the joist (at least 3.50" from center of cutout to the edge of joist).

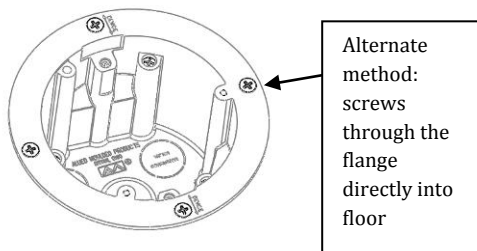
2. Cut a 4.00 inch diameter hole in the finish floor and subfloor.



3. Bring the electrical cable through the hole in the floor
4. Insert the electrical cable into the plastic box through one of the cable clamp slots in the box. The cable can also be inserted through one of the round knockouts using a non-metallic cable clamp (not included).
5. Place the plastic box into the hole in the floor. Note the 'Device' marking on the flange of the box to assist in orienting the receptacle as desired.
6. Secure the plastic box in place by tightening the three wing screws as shown.



7. Alternate installation method: screw the box down directly to the floor using the four #6 wood screws through the countersunk holes in the flange of the plastic box.

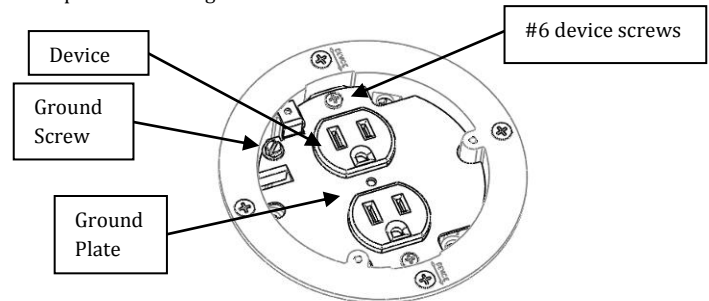


8. Connect copper wires only to the device according to local electrical code.

For back wiring, strip the wire insulation by 5/8". Loosen the terminal screws and insert the black wire into the hole labeled 'black' or 'hot' and the white wire into the hole labeled 'white' or 'neutral'. Tighten each terminal screw securely.

For side wiring, strip the wire insulation by 5/8". Connect the hot line (black wire) to the brass colored screw. Connect the neutral line (white wire) to the silver colored screw. Wrap each stripped wire 3/4 turn clockwise under the terminal screws. Tighten the terminal screws securely while holding the wire in position.

9. Secure the device to the ground plate and the ground plate to the plastic box using #6 screws as shown.



10. Place gasket in position on the flange of the floor box. Make sure that the three holes on the gasket line up with the mating holes of the floor box.
11. Attach cover on top of gasket and secure in position using the three #6 oval head screws.

