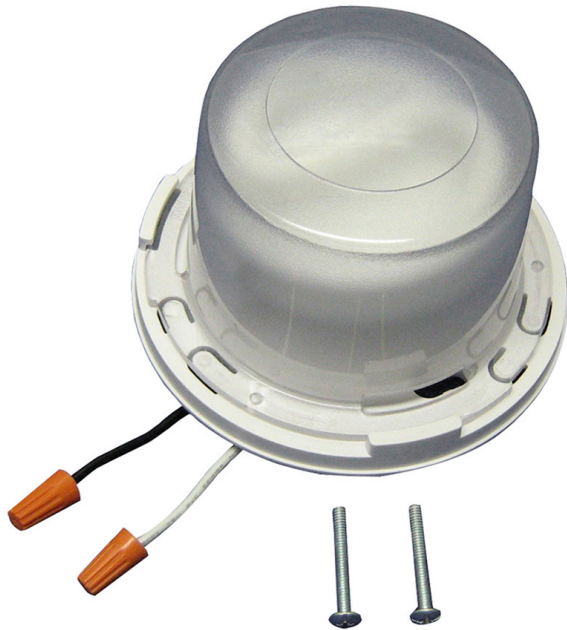




**ALLIED
MOULDED
PRODUCTS, Inc.**

**419-636-4217
222 N. Union St.
Bryan, OH 43506**



Product Info

UPC: 85339870050

UNSPSC: 39111501

Carton Quantity: 12

Carton Weight: 9 lbs

Country of Origin: China

Color: White

Patents: U.S. Patent No. D652,979

Material: Polycarbonate

Additional Materials: Plated carbon steel fasteners

LH-CFL1

13 Watt GU24 10, 000 HR keyless compact fluorescent light fixture with lens

Closure Type:

Mounting Description: 2 Screws

Box Features:

Installation Type:

Height: 3-1/32 in

Width: 5-1/16 in

Features:

Energy Star listed luminaire, light output (900 lumens), polycarbonate lens with spring loaded snap tab assembly, wire leads, base sized to fit over 3.5" and 4" electric outlet boxes, mounting screws and wire nuts included

Application:

Compact fluorescent luminaires for use in attics, basements, closets and garages where on/off switch exists

Standards:

ANSI / UL 1598: [File No. E337796](#)

