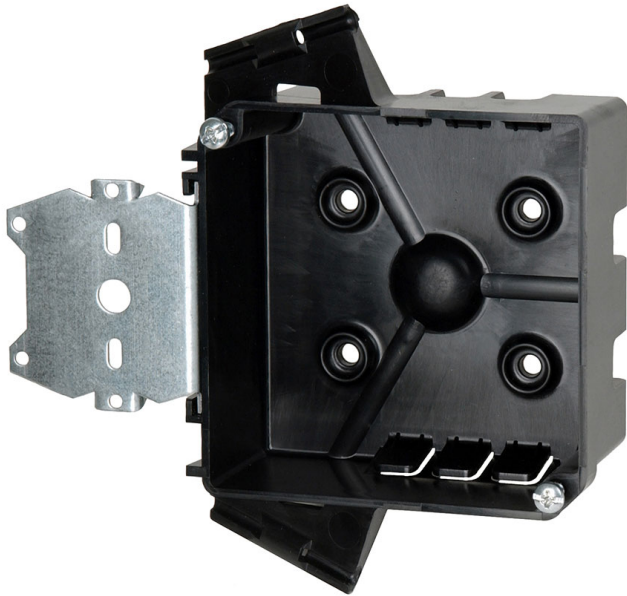




**ALLIED  
MOULDED  
PRODUCTS, Inc.**

**419-636-4217  
222 N. Union St.  
Bryan, OH 43506**



## PJ-20H

4 square inch electrical junction box for use with nonmetallic sheathed cable

**Closure Type:**

**Mounting Description:** Stud mount hanger bracket offset for flush mount plaster ring

**Box Type:** Wall - Junction

**Box Features:** "HL" hanger

**Installation Type:** New Work

**Height:** 4 in

**Width:** 4 in

**Depth:** 1-5/8 in

**Volume:** 20.5 cu in

## Product Info

**Brand:** flexBOX

**UPC:** 85339990000

**UNSPSC:** 39121332

**Carton Quantity:** 48

**Carton Weight:** 15 lbs

**Country of Origin:** United States of America

**Color:** Black

**Fire Classification:** Fire Test of Building Construction Materials ANSI / UL 263: [File No. CEYY.R9379](#) (Category / File No.) *Note: Products must also be certified to: ANSI / UL 514C Fire Resistance Classification in Wall Assemblies 2-Hours or less* Shall be separated by a horizontal distance of not less than 24 inches *Note: For more details please refer to the UL fire resistive directory and Allied Moulded's CEYY.9379 (Outlet boxes and fittings classified for fire resistance)*

**Patents:** U.S. Patent No. 6,365,831 B1

**Material:** Polyvinyl Chloride

**Additional Materials:** Galvanized steel brackets and plated carbon steel fasteners, Plated carbon steel fasteners

### Features:

Machine tapped cover screw holes, cover screws included

### Application:

In the wall junction box with optional single and two gang plaster ring covers for junction box capacity and device applications - 2 HR fire resistive walls

### Standards:

ANSI / UL 514C: [File No. E30594](#)

