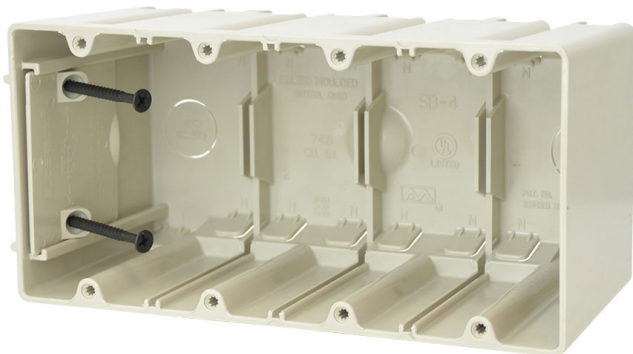




**ALLIED  
MOULDED  
PRODUCTS, Inc.**

**419-636-4217  
222 N. Union St.  
Bryan, OH 43506**



## SB-4

Four gang adjustable electrical box for use with nonmetallic sheathed cable

**Mounting Description:** 2 Screws

**Box Type:** Wall - Switch/Receptacle

**Box Features:** Adjustable box (SLIDERBOX®), Screws

**Installation Type:** New Work, Old Work

**Height:** 3-3/4 in

**Width:** 7-5/8 in

**Depth:** 3-9/16 in

**Volume:** 74.8 cu in

**Number of Gangs:** 4

## Product Info

**Brand:** SLIDERBOX

**UPC:** 85339945048

**UNSPSC:** 39121308

**Carton Quantity:** 6

**Carton Weight:** 4 lbs

**Country of Origin:** United States of America

**Color:** Beige

**Fire Classification:** Fire Test of Building Construction

**Material** Not for use in fire resistive wall or ceiling assemblies

**Patents:** U.S. Patent No. 7,855,338, U.S. Patent No. 6,365,831 B1

**Material:** Polycarbonate

**Additional Materials:** Carbon steel fasteners

## Features:

Molded-in splined device holes, adjustable slider plate for additional wall substrate thickness, slot provision for low voltage divider, rectangular exterior for easy cut-in, leveling ribs, offset gauge marks

## Application:

New and old work residential construction

## Standards:

ANSI / UL 514C: [File No. E30594](#)

