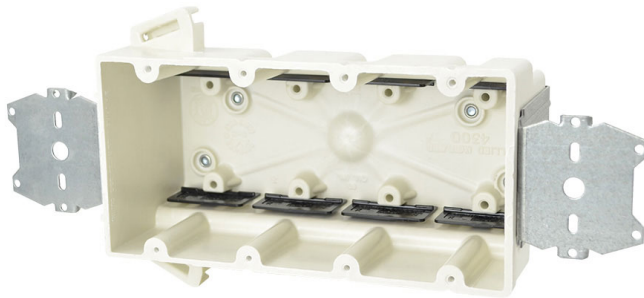




**ALLIED
MOULDED
PRODUCTS, Inc.**

**419-636-4217
222 N. Union St.
Bryan, OH 43506**



4300-2Z2K

Four gang electrical box for use with nonmetallic sheathed cable *Replacement for 4300-2Z2*

Mounting Description: Stud mount "Z" hanger bracket both sides with 1/4" offset

Box Type: Wall - Switch/Receptacle

Box Features: "Z" hanger(s), Speed "K" nonmetallic clamps

Installation Type: New Work

Height: 3-3/4 in

Width: 7-1/2 in

Depth: 3 in

Volume: 60 cu in

Number of Gangs: 4

Product Info

Brand: fiberglassBOX

UPC: 85339169079

UNSPSC: 39121308

Carton Quantity: 12

Carton Weight: 15 lbs

Country of Origin: United States of America

Color: Off white

Fire Classification: **Fire Test of Building Construction Materials** ANSI / UL 263: [File No. CEYY.R9379](#) (Category / File No.) *Note: Products must also be certified to: ANSI / UL 514C* **Fire Resistance Classification in Wall Assemblies 2-Hours or less** Shall be separated by a horizontal distance of not less than 24 inches *Note: For more details please refer to the UL fire resistive directory and Allied Moulded's CEYY.9379 (Outlet boxes and fittings classified for fire resistance)*

Material: Fiberglass reinforced polyester

Additional Materials: Galvanized steel brackets and plated carbon steel fasteners, Polyvinyl chloride clamps

Features:

Machine tapped device holes, leveling ribs, rigid hard box construction, no distortion with high temperatures, shatter resistant with low temperatures, Speed "K" Clamps factory installed

Application:

New work residential construction stud face mounted 2 HR fire resistive walls

Standards:

ANSI / UL 514C: [File No. E30594](#)

