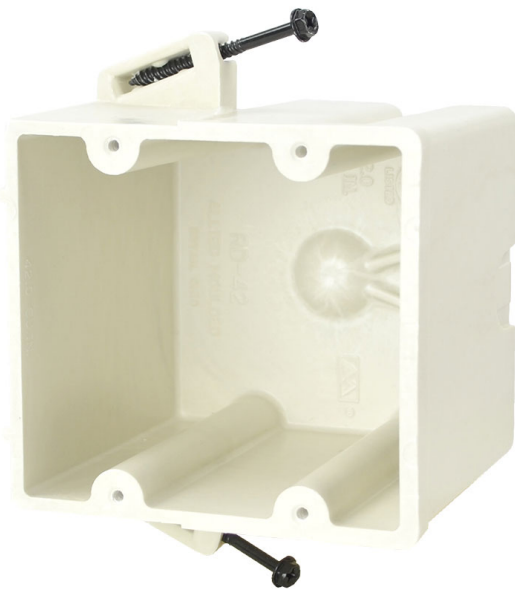




**ALLIED  
MOULDED  
PRODUCTS, Inc.**

**419-636-4217  
222 N. Union St.  
Bryan, OH 43506**



## RD-42SS

Range/dryer/car charger electrical box for use with nonmetallic sheathed cable

**Mounting Description:** Steel stud screws for use with non-load bearing studs 22 gauge or lighter

**Box Type:** Wall - Switch/Receptacle

**Box Features:** Screws

**Installation Type:** New Work

**Height:** 3-3/4 in

**Width:** 4 in

**Depth:** 3-13/16 in

**Volume:** 42 cu in

## Product Info

**Brand:** fiberglassBOX

**UPC:** 85339129059

**UNSPSC:** 39121309

**Carton Quantity:** 24

**Carton Weight:** 22 lbs

**Country of Origin:** United States of America

**Color:** Off white

**Fire Classification:** Fire Test of Building Construction Materials ANSI / UL 263: [File No. CEYY.R9379](#) (Category / File No.) *Note: Products must also be certified to: ANSI / UL 514C Fire Resistance Classification in Wall Assemblies 2-Hours or less* Shall be separated by a horizontal distance of not less than 3 inches *Note: For more details please refer to the UL fire resistive directory and Allied Moulded's CEYY.9379 (Outlet boxes and fittings classified for fire resistance)*

**Material:** Fiberglass reinforced polyester

**Additional Materials:** Carbon steel fasteners, Plated carbon steel clamp and fasteners

## Features:

Machine tapped holes for 2-position device , internal metal clamp for easy wire adjustment, offset gauge marks, leveling ribs, rigid hard box construction, no distortion with high temperatures, shatter resistant with low temperatures

## Application:

New work residential construction – steel or wood studs 2 HR fire resistive walls

## Standards:

ANSI / UL 514C: [File No. E30594](#)

