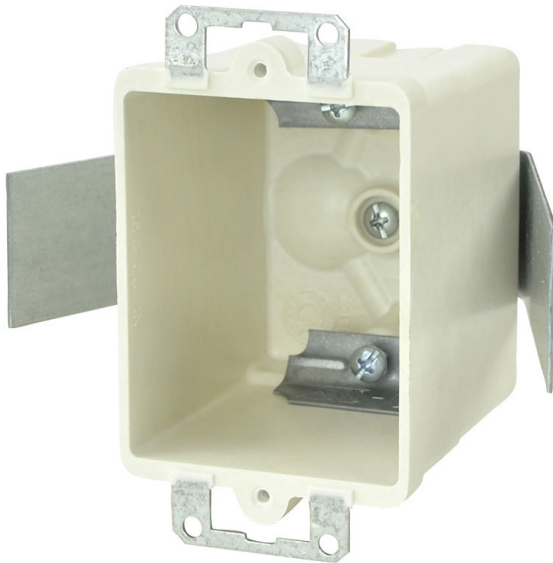




**ALLIED
MOULDED
PRODUCTS, Inc.**

**419-636-4217
222 N. Union St.
Bryan, OH 43506**



9361-ESC2

Single gang electrical box for use with nonmetallic sheathed cable

Closure Type:

Mounting Description: Snap bracket/metal ears wall compression

Box Type: Wall - Switch/Receptacle

Box Features: Metal ears, Snap bracket, Wire clamps

Installation Type: Old Work

Height: 3-1/4 in

Width: 2-3/8 in

Depth: 2-7/8 in

Volume: 16 cu in

Number of Gangs: 1

Product Info

Brand: fiberglassBOX

UPC: 85339105640

UNSPSC: 39121308

Carton Quantity: 50

Carton Weight: 23 lbs

Country of Origin: United States of America

Color: Off white

Fire Classification: **Fire Test of Building Construction Materials** ANSI / UL 263: [File No. CEYY.R9379](#) (Category / File No.) *Note: Products must also be certified to: ANSI / UL 514C* **Fire Resistance Classification in Wall Assemblies 2-Hours or less** Shall be separated by a horizontal distance of not less than 3 inches *Note: For more details please refer to the UL fire resistive directory and Allied Moulded's CEYY.9379 (Outlet boxes and fittings classified for fire resistance)*

Material: Fiberglass reinforced polyester

Additional Materials: Galvanized steel brackets and plated carbon steel fasteners, Plated carbon steel clamp and fasteners

Features:

Machine tapped device holes, rigid hard box construction, no distortion with high temperatures, shatter resistant with low temperatures

Application:

Old work residential construction 2 HR fire resistive walls

Standards:

ANSI / UL 514C: [File No. E30594](#)

