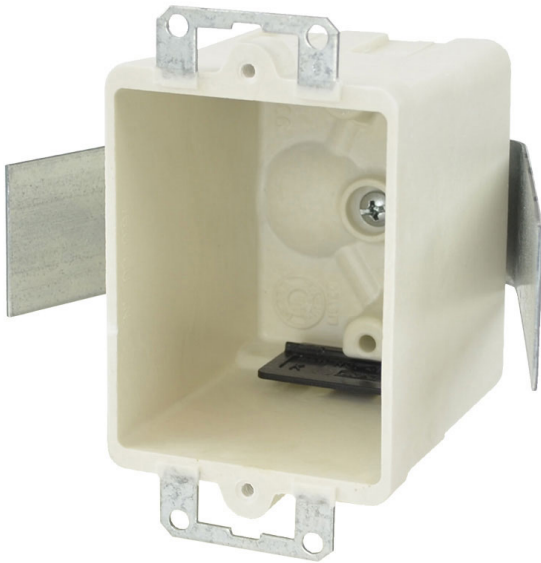




**ALLIED  
MOULDED  
PRODUCTS, Inc.**

**419-636-4217  
222 N. Union St.  
Bryan, OH 43506**



## 9361-ESK

Single gang electrical box for use with nonmetallic sheathed cable

**Closure Type:**

**Mounting Description:** Snap bracket/metal ears wall compression

**Box Type:** Wall - Switch/Receptacle

**Box Features:** Metal ears, Snap bracket, Speed "K" nonmetallic clamps

**Installation Type:** Old Work

**Height:** 3-1/4 in

**Width:** 2-3/8 in

**Depth:** 2-7/8 in

**Volume:** 16 cu in

**Number of Gangs:** 1

## Product Info

**Brand:** fiberglassBOX

**UPC:** 85339105664

**UNSPSC:** 39121308

**Carton Quantity:** 50

**Carton Weight:** 23 lbs

**Country of Origin:** United States of America

**Color:** Off white

**Fire Classification:** Fire Test of Building Construction Materials ANSI / UL 263: [File No. CEYY.R9379](#) (Category / File No.) *Note: Products must also be certified to: ANSI / UL 514C Fire Resistance Classification in Wall Assemblies 2-Hours or less* Shall be separated by a horizontal distance of not less than 3 inches *Note: For more details please refer to the UL fire resistive directory and Allied Moulded's CEYY.9379 (Outlet boxes and fittings classified for fire resistance)*

**Material:** Fiberglass reinforced polyester

**Additional Materials:** Galvanized steel brackets and plated carbon steel fasteners, Polyvinyl chloride clamps

## Features:

Machine tapped device holes, rigid hard box construction, no distortion with high temperatures, shatter resistant with low temperatures, Speed "K" Clamps factory installed

## Application:

Old work residential construction 2 HR fire resistive walls

## Standards:

ANSI / UL 514C: [File No. E30594](#)

