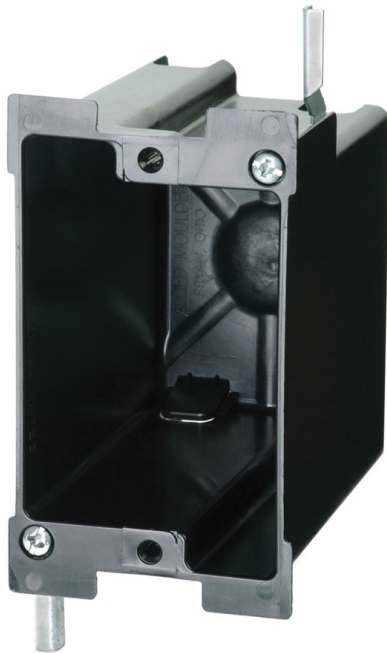




ALLIED
MOULDED
PRODUCTS, Inc.

419-636-4217
222 N. Union St.
Bryan, OH 43506



P-1220W

Single gang electrical box for use with nonmetallic sheathed cable

Mounting Description: Metal wing brackets/nonmetal ears wall compression

Box Type: Wall - Switch/Receptacle

Box Features: Nonmetal ears, Wing bracket

Installation Type: Old Work

Height: 3-3/4 in

Width: 2-5/16 in

Depth: 3-3/4 in

Volume: 22.5 cu in

Number of Gangs: 1

Product Info

Brand: flexBOX

UPC: 85339249139

UNSPSC: 39121308

Carton Quantity: 48

Carton Weight: 14 lbs

Country of Origin: United States of America

Color: Black

Fire Classification: Fire Test of Building Construction Materials ANSI / UL 263: [File No. CEYY.R9379](#) (Category / File No.) Note: Products must also be certified to: ANSI / UL 514C **Fire Resistance Classification in Wall Assemblies 2-Hours or less** Shall be separated by a horizontal distance of not less than 24 inches **Fire Resistance Classification in Floor-Ceiling Assemblies 2-Hours or Less** Distance between boxes must be 4-½ feet from one another *Note: For more details please refer to the UL fire resistive directory and Allied Moulded's CEYY.9379 (Outlet boxes and fittings classified for fire resistance)*

Patents: U.S. Patent No. 6,365,831 B1

Material: Polyvinyl Chloride

Additional Materials: Galvanized steel brackets and plated carbon steel fasteners

Features:

Molded-in spline device holes, rectangular exterior for easy cut-in

Application:

Old work residential construction 2 HR fire resistive walls

Standards:

ANSI / UL 514C: [File No. E30594](#)

