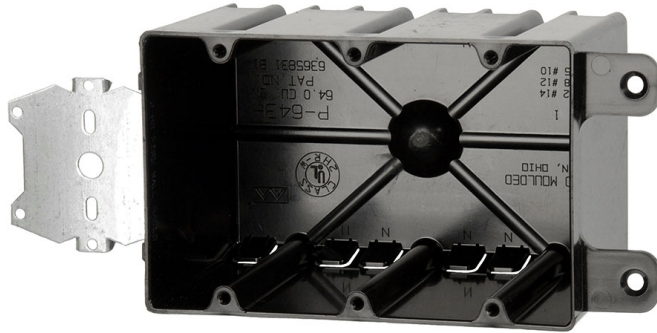




**ALLIED  
MOULDED  
PRODUCTS, Inc.**

**419-636-4217  
222 N. Union St.  
Bryan, OH 43506**



## P-643H

Three gang electrical box for use with nonmetallic sheathed cable

**Closure Type:**

**Mounting Description:** Stud face mount steel hanger bracket with 1/2" offset and opposite side drywall tabs

**Box Type:** Wall - Switch/Receptacle

**Box Features:** "HL" hanger

**Installation Type:** New Work

**Height:** 3-3/4 in

**Width:** 5-13/16 in

**Depth:** 3-9/16 in

**Volume:** 64 cu in

**Number of Gangs:** 3

## Product Info

**Brand:** flexBOX

**UPC:** 85339463030

**UNSPSC:** 39121308

**Carton Quantity:** 20

**Carton Weight:** 11 lbs

**Country of Origin:** United States of America

**Color:** Black

**Fire Classification:** Fire Test of Building Construction Materials ANSI / UL 263: [File No. CEYY.R9379](#) (Category / File No.) *Note: Products must also be certified to: ANSI / UL 514C Fire Resistance Classification in Wall Assemblies 2-Hours or less* Shall be separated by a horizontal distance of not less than 24 inches *Note: For more details please refer to the UL fire resistive directory and Allied Moulded's CEYY.9379 (Outlet boxes and fittings classified for fire resistance)*

**Patents:** U.S. Patent No. 6,365,831 B1

**Material:** Polycarbonate

**Additional Materials:** Galvanized snap in bracket

### Features:

Molded-in splined device holes, leveling ribs

### Application:

New work residential construction 2 HR fire resistive walls

### Standards:

ANSI / UL 514C: [File No. E30594](#)

