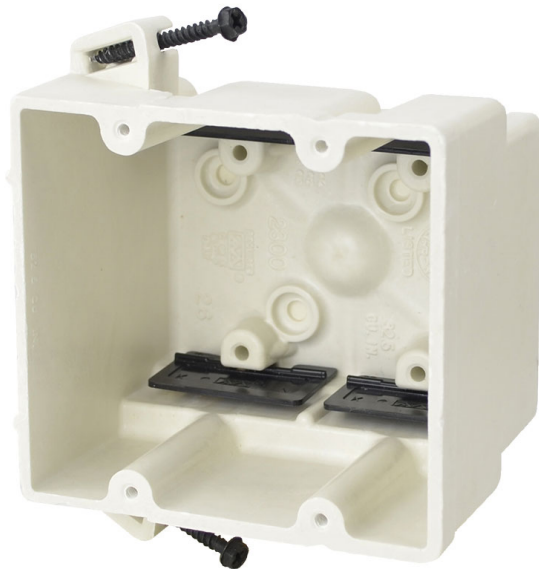




**ALLIED  
MOULDED  
PRODUCTS, Inc.**

**419-636-4217  
222 N. Union St.  
Bryan, OH 43506**



## 2302-SSK

Two gang electrical box for use with nonmetallic sheathed cable *Replacement for 2302-SS*

**Mounting Description:** Steel stud screws for use with non-load bearing studs 22 gauge or lighter

**Box Type:** Wall - Switch/Receptacle

**Box Features:** Screws, Speed "K" nonmetallic clamps

**Installation Type:** New Work

**Height:** 3-3/4 in

**Width:** 4 in

**Depth:** 3-7/16 in

**Volume:** 37 cu in

**Number of Gangs:** 2

## Product Info

**Brand:** fiberglassBOX

**UPC:** 85339130819

**UNSPSC:** 39121308

**Carton Quantity:** 48

**Carton Weight:** 30 lbs

**Country of Origin:** United States of America

**Color:** Off white

**Fire Classification:** **Fire Test of Building Construction Materials** ANSI / UL 263: [File No. CEYY.R9379](#) (Category / File No.) *Note: Products must also be certified to: ANSI / UL 514C* **Fire Resistance Classification in Wall Assemblies 2-Hours or less** Shall be separated by a horizontal distance of not less than 3 inches *Note: For more details please refer to the UL fire resistive directory and Allied Moulded's CEYY.9379 (Outlet boxes and fittings classified for fire resistance)*

**Material:** Fiberglass reinforced polyester

**Additional Materials:** Carbon steel fasteners, Polyvinyl chloride clamps

## Features:

Machine tapped device holes, slot provision for low voltage divider, offset gauge marks, leveling ribs, rigid hard box construction, no distortion with high temperatures, shatter resistant with low temperatures, Speed "K" Clamps factory installed

## Application:

New work residential construction – steel or wood studs 2 HR fire resistive walls

## Standards:

ANSI / UL 514C: [File No. E30594](#)

