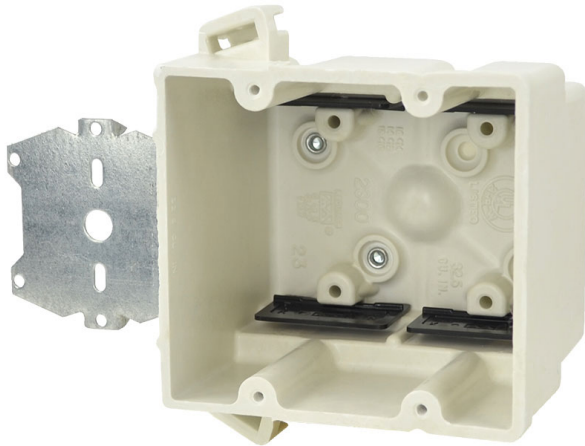




**ALLIED  
MOULDED  
PRODUCTS, Inc.**

**419-636-4217  
222 N. Union St.  
Bryan, OH 43506**



## 2300-Z4K

Two gang electrical box for use with nonmetallic sheathed cable *Replacement for 2300-Z4*

**Mounting Description:** Stud mount "Z" hanger bracket with 1/2" offset

**Box Type:** Wall - Switch/Receptacle

**Box Features:** "Z" hanger(s), Speed "K" nonmetallic clamps

**Installation Type:** New Work

**Height:** 3-3/4 in

**Width:** 4 in

**Depth:** 3 in

**Volume:** 32.5 cu in

**Number of Gangs:** 2

## Product Info

**Brand:** fiberglassBOX

**UPC:** 85339127017

**UNSPSC:** 39121308

**Carton Quantity:** 48

**Carton Weight:** 37 lbs

**Country of Origin:** United States of America

**Color:** Off white

**Fire Classification:** **Fire Test of Building Construction Materials** ANSI / UL 263: [File No. CEYY.R9379](#) (Category / File No.) *Note: Products must also be certified to: ANSI / UL 514C* **Fire Resistance Classification in Wall Assemblies 2-Hours or less** Shall be separated by a horizontal distance of not less than 3 inches *Note: For more details please refer to the UL fire resistive directory and Allied Moulded's CEYY.9379 (Outlet boxes and fittings classified for fire resistance)*

**Material:** Fiberglass reinforced polyester

**Additional Materials:** Galvanized steel brackets and plated carbon steel fasteners, Polyvinyl chloride clamps

## Features:

Machine tapped device holes, leveling ribs, rigid hard box construction, no distortion with high temperatures, shatter resistant with low temperatures, Speed "K" Clamps factory installed

## Application:

New work residential construction stud face mounted 2 HR fire resistive walls

## Standards:

ANSI / UL 514C: [File No. E30594](#)

