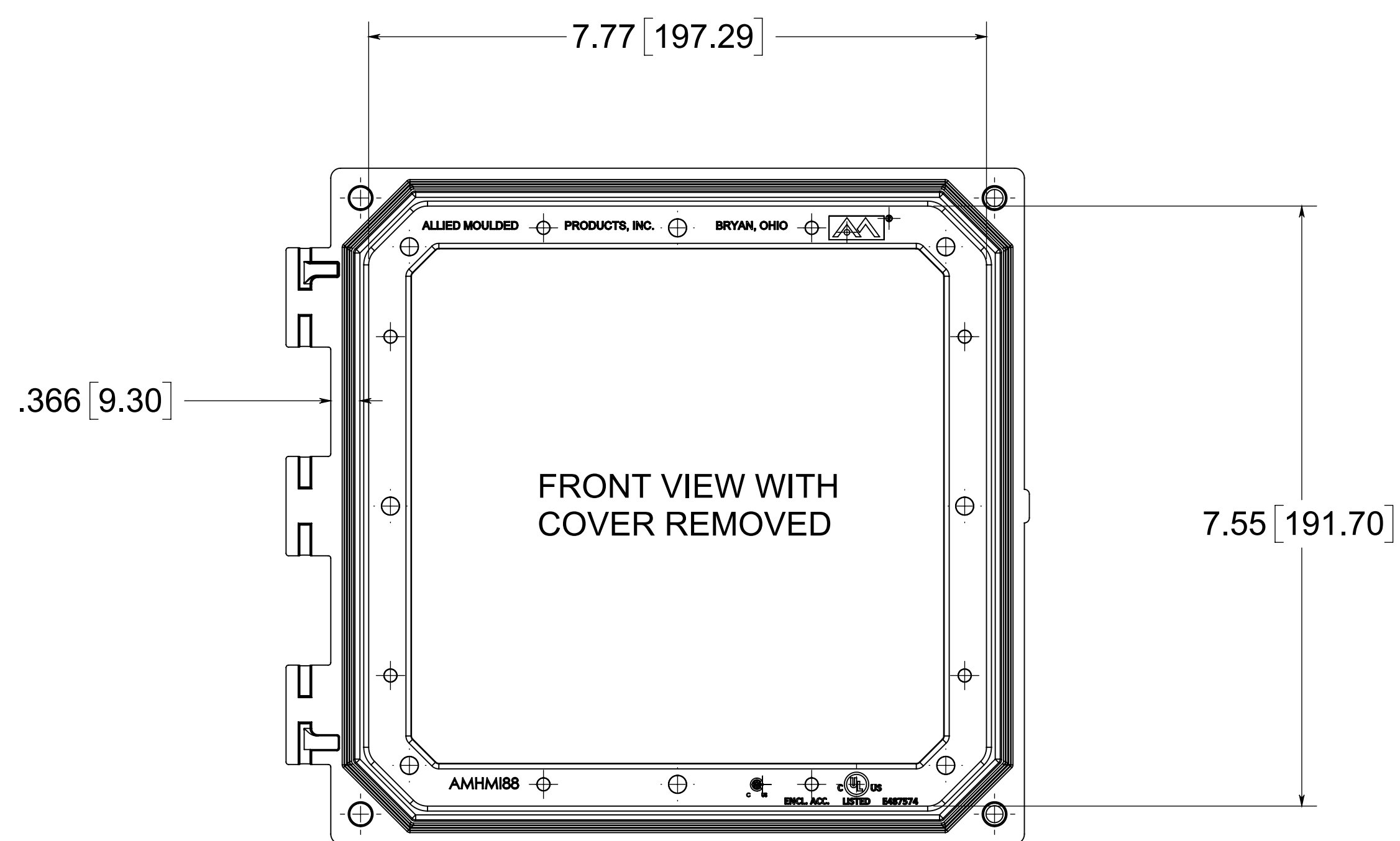
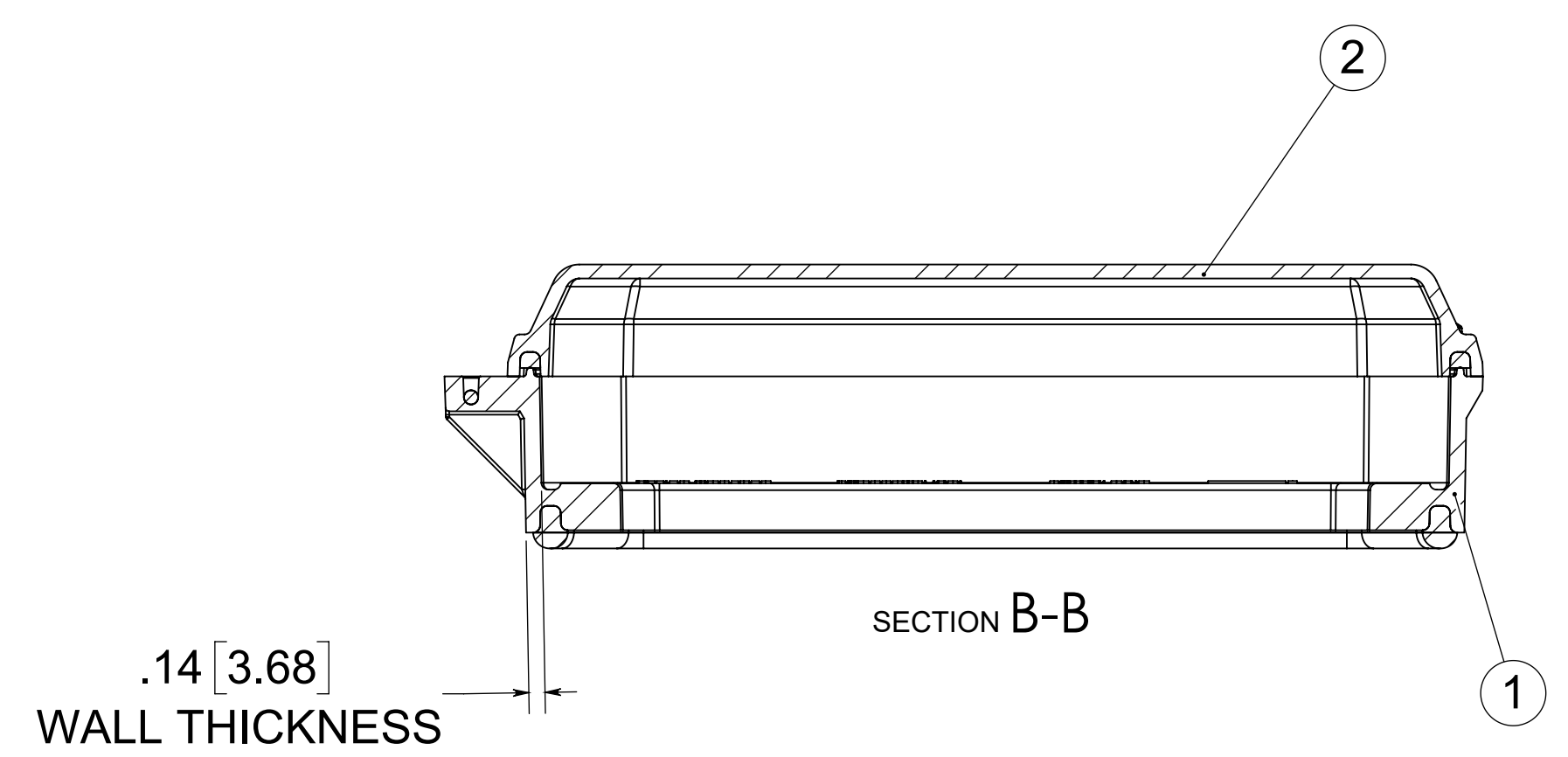
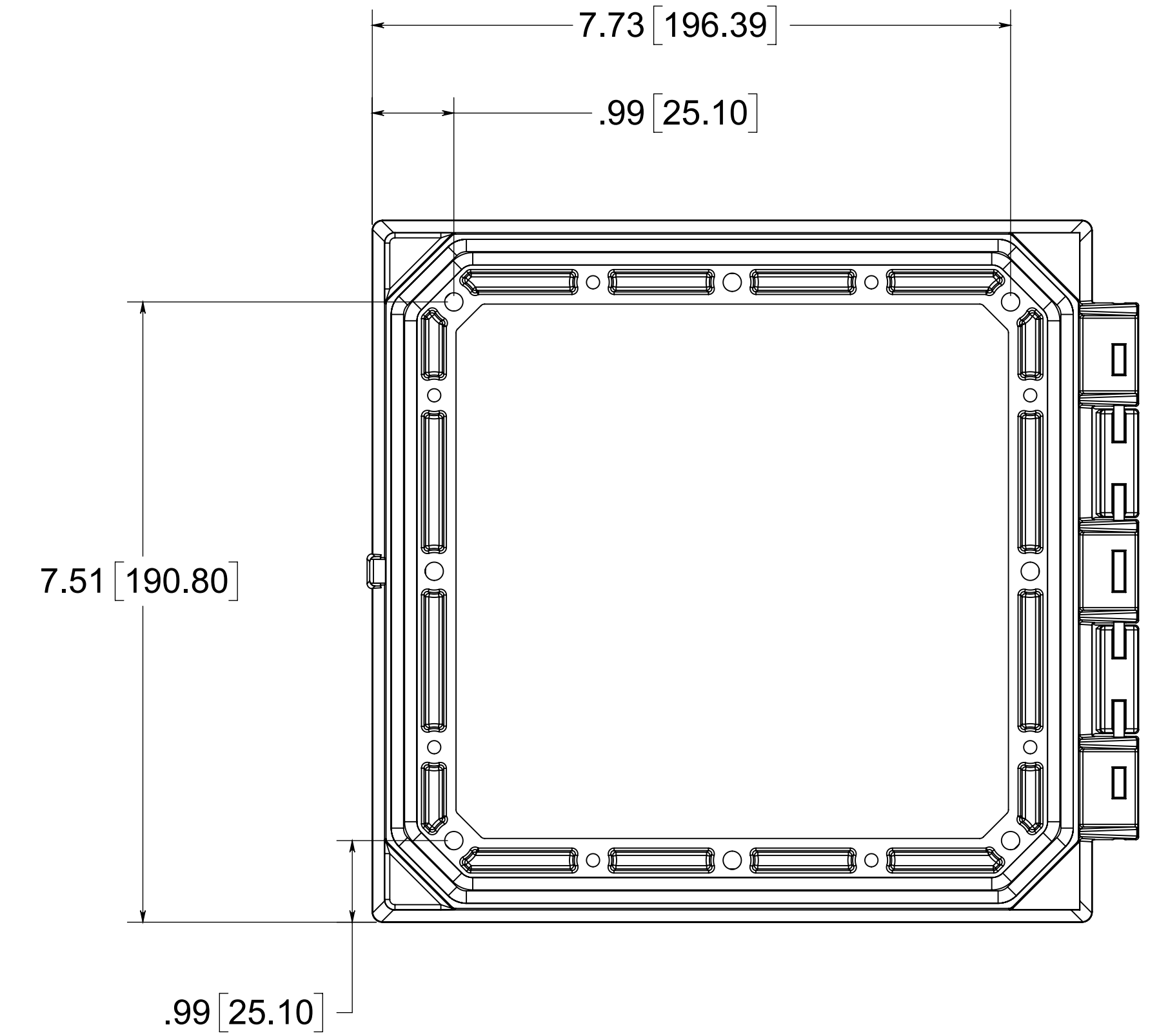
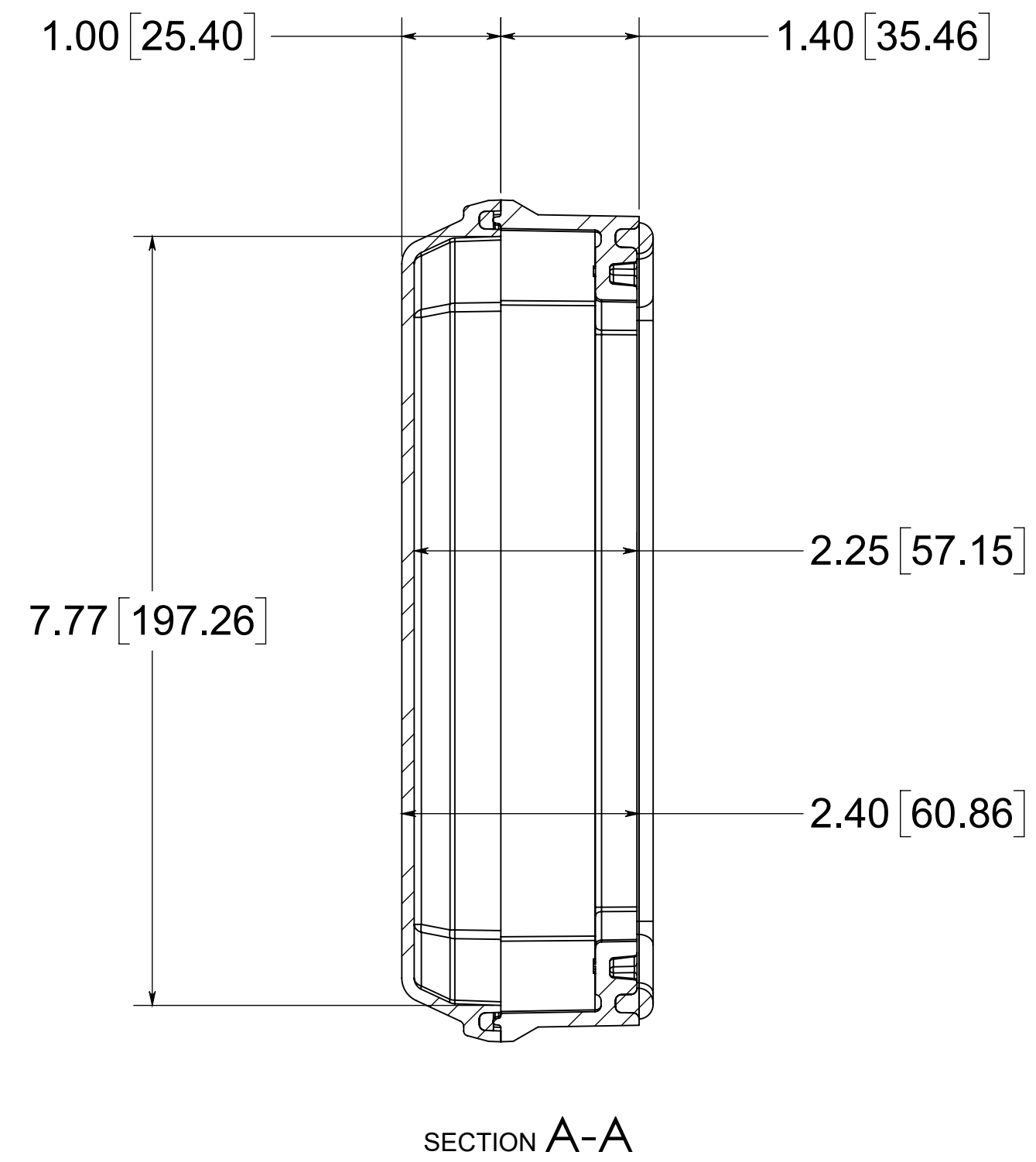
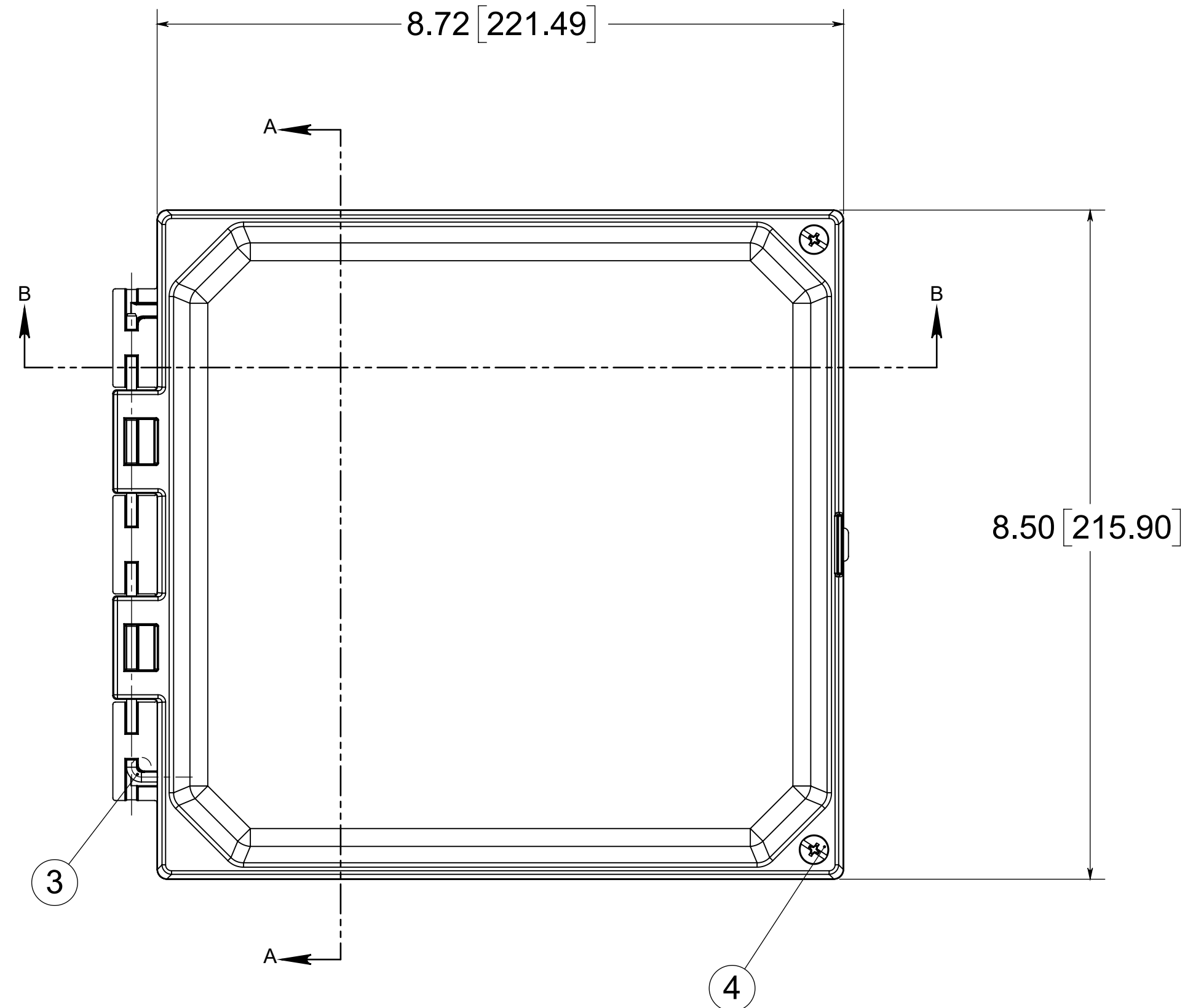


CONFIDENTIAL
 THIS MATERIAL IS OWNED BY THE ALLIED MOULDED PRODUCTS COMPANY. IT IS DISCLOSED IN CONFIDENCE AND IS NOT TO BE REPRODUCED OR DISTRIBUTED WITHOUT PRIOR WRITTEN PERMISSION FROM ALLIED MOULDED PRODUCTS.
 © Allied Moulded Products, Inc. All Rights Reserved

Date	Rev	Description	ECN No.	DR	CK	REL
10/02/2017	01	INITIAL RELEASE	ECN-12301	ZDW	SMZ	GEL
-	-	-	-	-	-	-
-	-	-	-	-	-	-



ITEM NO.	PART NUMBER	DESCRIPTION	Default/QTY.
1	WGF88	WIP FIP 88 HMI FRAME	1
2	WGP88CX	WIP FIP CLEAR POLY CVR	1
3	70-HPIN8316	HINGE PIN	1
4	CMSO316	NEMA COVER MOUNT 316 SCREW WITH O-RING	2

MATERIAL:
 BOX - INJECTED POLYCARBONATE
 STANDARD COVER- INJECTED POLYCARBONATE
 CLEAR COVER- INJECTED POLYCARBONATE

DRAWING STAMP	FOR QUOTATION ONLY	MOLD VERSION: <MOLD VERSION>	PROJECT NO.	ASSET NO.	BOM PART NO.
	UNLESS OTHERWISE SPECIFIED: DIMENSIONS ARE IN INCHES	STANDARD SYMBOLS D+ = PLUS DRAFT D- = MINUS DRAFT M = MATCH DRILL 1 = 1° DRAFT 3 = 3° DRAFT S = STEEL SAFE	ALLIED MOULDED PRODUCTS BRYAN, OHIO The Original Fiber Glass Outlet Box		
TOLERANCES:	STRAIGHTNESS &/OR FLATNESS: .005"	DRAWING SIZE:	Access-Indus DRAWN: ZDW 9/29/2017 TEST CHECK: ZDW 10/05/2017 2ND CHECK: SMZ 10/10/2017 RELEASED: GEL 10/10/2017		
.XX = ±.01 .XXX = ±.005	MACHINED SURFACES: 125° OR BETTER	FRACTIONAL: ±1/64	MATERIAL: SEE BOM FINISH / HEAT TREAT: SEE NOTES PRINT NUMBER: AMHM188CC		
ANGULAR: ±0°30'	PERPEND.: .005"	CONCEN.: .005"	SHEET 1 OF 1 DO NOT SCALE CRIB NO.: REV: 01		