



**ALLIED
MOULDED
PRODUCTS, Inc.**

THE CONTRACTOR'S CHOICE

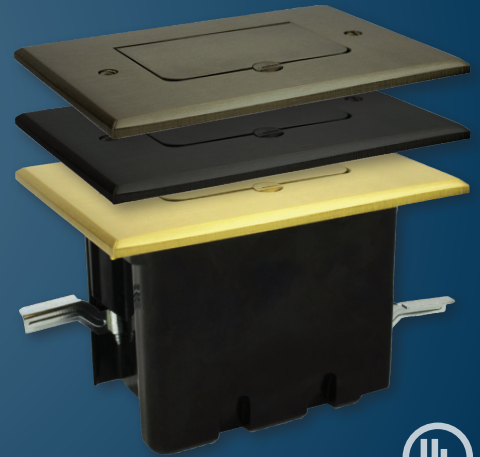
FLOOR BOX ROUGH-IN KITS

ROUGH-IN / TRIM-OUT OPTIONS AVAILABLE NOW

P/Ns FB-2, FB-3, FB-4, and FB-6 models

Allied Moulded's series of floor box assemblies are now available in rough-in and trim-out configurations. Rough-in kits feature rectangular or round box profiles, and can be paired with a variety of cover options including; brass, dark bronze, or nickel-plated finishes.

Floor box assemblies can be used in residential or commercial construction and with many different flooring applications including carpet, ceramic tile, and laminate or wood flooring. Low voltage options are available in specific models with the use of industry standard keystone plugins.

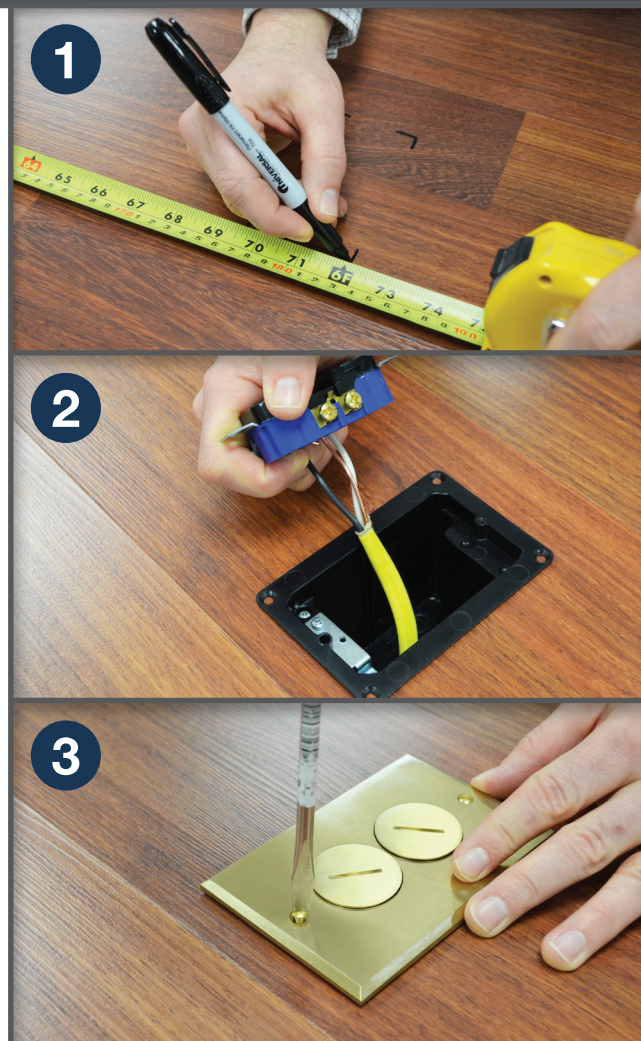


Product Features & Benefits

- Rough-in and trim-out kits packaged separately for added flexibility and customization
- Available cover finish options: brushed brass, dark bronze, or nickel-plated brass
- Duplex and decorative style devices are available (specific devices vary by model)
- Low voltage (LV) models provided with industry standard keystone openings
- Device covers seal water tight and allow assembly to meet UL 514C scrub-water exclusion test
- TR Tamper Resistant receptacle; 15 amp 125 volt with ground (NEMA config. 5-15R). Note: Can easily be adapted to commercial applications with the use of industry standard receptacles
- Provisions for cable entry through molded-in Speed Klamps™ or 1/2" knockouts
- Basic rectangular exterior profile in all single gang boxes for quick and easy cut-in installation



**Learn more
about our Floor
Box products!**



**ALLIED
MOULDED
PRODUCTS, Inc.**

222 N. Union Street
Bryan, OH 43506

P: 1-800-722-2679
F: 1-800-237-7269

sales@alliedmoulded.com
www.alliedmoulded.com





Rough-In Kits

Rough-in kits are available in rectangular and round box profiles, and include a device and all box installation hardware. Choose from a variety of trim-out cover finish options to complete the box assembly.



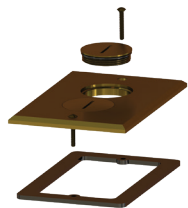
FB-4RI

Catalog Number	Cu. In Volume	Box Profile	Device	LV Provision	UPC# 85339	Std. Pkg. Qty.	Std. Wt. (lb.)
FB-2RI	24.5	Rectangle	Duplex	No	98459	6	4
FB-3RI	24.5	Round	Duplex	No	98460	6	4
FB-4RI	19.5	Round	Duplex/LV	Yes	98461	6	4
FB-6RI	24.5	Rectangle	Decorative	No	98462	6	4

Note: Rough-in kits include; floor box, dust plate, mounting screws, and device. Low voltage keystone plugs sold separately. See website for additional product details.

Trim-Out Kits

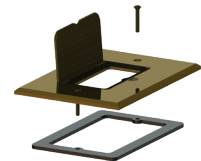
Trim-out kits should be matched with the appropriate rough-in kit to build a complete floor box assembly. For added customization, mix and match multiple cover finish options with each rough-in kit.



FB-2CVR



FB-3CVR



FB-6CVR

	Catalog Number	Cover Finish	Cover Type	Device	UPC# 85339	Std. Pkg Qty.	Std. Wt. (lb.)
FB-2RI	FB-2CVR	Brass	Screw Plug	Duplex	94133	1	1
	FB-2DBCVR	Dark Bronze	Screw Plug	Duplex	99602	1	1
	FB-2NCVR	Nickel	Screw Plug	Duplex	94134	1	1
FB-3RI	FB-3CVR	Brass	Screw Plug	Duplex	94135	1	1
	FB-3DBCVR	Dark Bronze	Screw Plug	Duplex	99604	1	1
	FB-3NCVR	Nickel	Screw Plug	Duplex	94136	1	1
FB-4RI	FB-4CVR	Brass	Screw Plug	Duplex/LV	99078	1	1
	FB-4DBCVR	Dark Bronze	Screw Plug	Duplex/LV	99079	1	1
	FB-4NCVR	Nickel	Screw Plug	Duplex/LV	99080	1	1
FB-6RI	FB-6CVR	Brass	Flip Lid	Decorative	97242	1	1
	FB-6DBCVR	Dark Bronze	Flip Lid	Decorative	97244	1	1
	FB-6NCVR	Nickel	Flip Lid	Decorative	97243	1	1

Note: Trim-out kits include; cover, screws, gasket, and installation instructions. Low voltage keystone plugs sold separately. See website for additional product details.